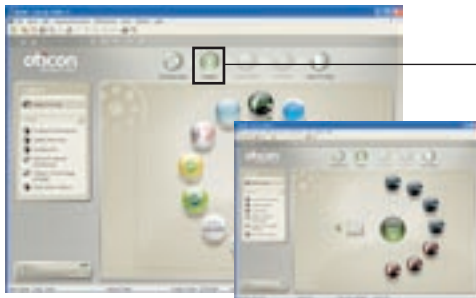


## Dual Quick Pediatric Fitting Guide

This Quick Pediatric Fitting Guide illustrates the recommended flow and initial fitting of Dual for children. More information is available in the general Genie fitting guide.



### Family

#### Select the family of the hearing instruments

1. Turn on the instrument and connect it to the HiPro or Noah link via Oticon programming cable #3 and the flex connector for ITE
  2. Click Detect
- Or:
3. Choose Dual from the family selection; secondly choose the Dual instrument

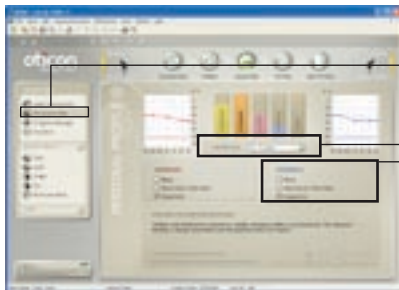


### Select Instrument

#### Choose style

Click on the Buttons and Beeps

1. Click on the style Rite
2. Choose Streamer (if there is a need for it)
3. Choose the Earpiece (e.g. Micro mold)



### Personal Profile

#### Ensure correct age

1. Ensure that the client's age is correct (automatically imported from Noah)
2. Complete hearing instrument experience duration (none, short time, long term)



### Program Manager

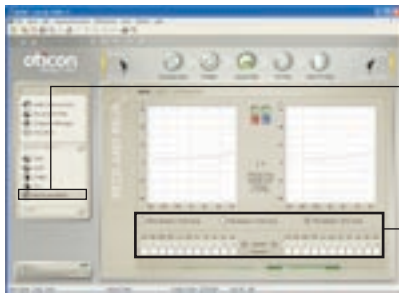
Dual only has one program available

The default rationale for a child is VAC and Dynamic Identity



### Acoustics

Check acoustics for agreement with prescribed Micro mold venting



## RECD and REUR

Insert the transducer used for audiometry measurement in the Audiometry tab

1. Click RECD or REUR
2. Enter the RECD values if you have measured them

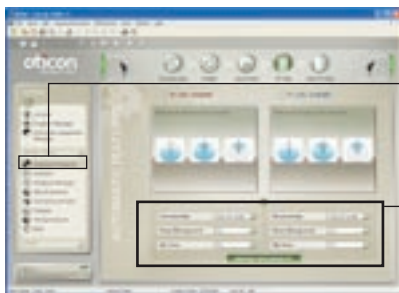


## Fitting

Verify settings

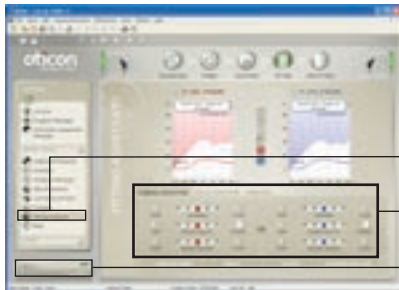
1. Make any changes using +/-

*Note: Shows expanded view of the control panel*



## Automatic Features

Go to Automatic Features to review settings for Tristate Noise Management and Multi-band Adaptive Directionality (default enabled)



## Fitting Assistant

Use the Fitting Assistant to help you fine tune

1. Select a tab: General Perception, Speech Perception or Own Voice
2. Adjust the control that matches the child's specific complain (move the control left or right - the initial setting is in the middle)
3. Play sounds from the "Oticon Sound Studio" by selecting "Sounds for Children"



## End Fitting

1. Enter the serial number for Streamer if there is one or press read serial number
2. Review selected identity and programs
3. Click on the Buttons and Beeps to test and change beeps settings



Click on "Save, Program and Exit" to store settings and complete the fitting