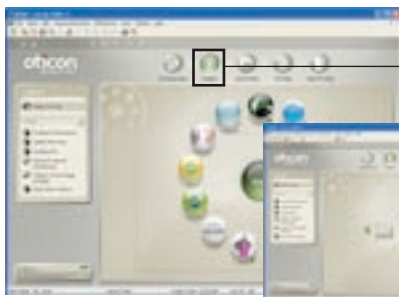


Hit Pediatric Quick Fitting Guide

This Pediatric Quick Fitting Guide illustrates the recommended flow and initial fitting of Hit for children. More information is available in the Genie fitting guide.



Family

Select the family of the hearing instruments

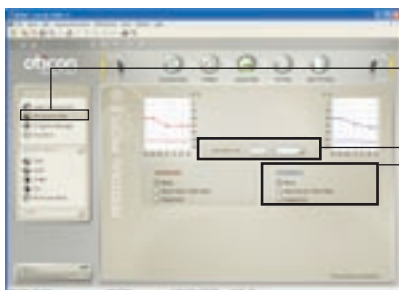
1. Turn on the instrument and connect it to the HiPro or Noah link via Oticon programming cable #3, and the programming shoe (BTE) or flex connector for ITE
 2. Click Detect
- Or:
3. Choose Hit from the family selection; secondly choose the Hit instrument



Select Instrument

Choose style

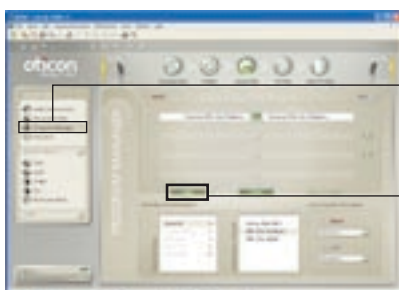
Click on the style (e.g. BTE or BTE power)



Personal Profile

Ensure correct age

1. Ensure that the client's age is correct (automatically imported from Noah)
2. Complete hearing instrument experience duration (none, short time, long term)



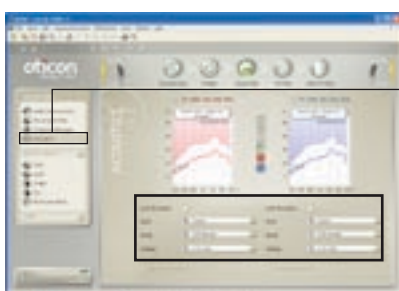
Program Manager

Choose the rationale and the programs

Select programs and check their configuration. There are 4 programs available

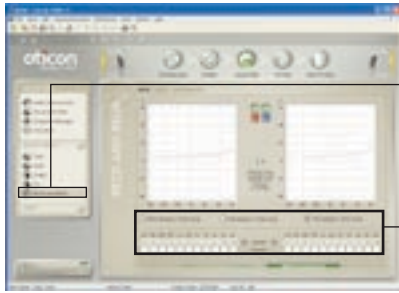
1. The default rationale for children is DSL v5.0 pediatric
2. There will be 2 programs available; a general and Telecoil
3. To add an extra program, click Add, and select "Options for Program 3"

Note: When the Amigo R12 FM receiver is connected, 2 programs are added: FM+M and FM



Acoustics

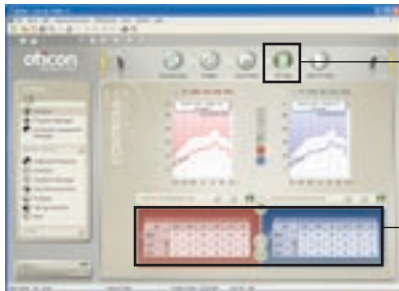
Check acoustics for agreement with prescribed earmold venting



RECD and REUR

Insert the transducer used for audiometry measurement in the Audiometry tab

1. Click RECD or REUR
2. Enter the RECD values if you have measured them



Fitting

Verify settings

1. Make any changes using +/-

Note: Shows expanded view of the control panel



Automatic Features

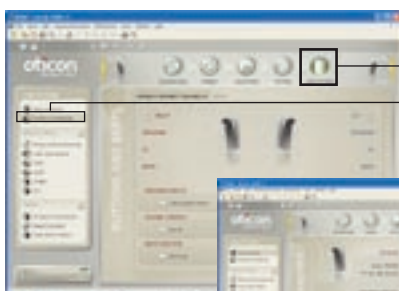
Go to Automatic Features to review settings for Noise Management and Adaptive Directionality (default enabled)



Fitting Assistant

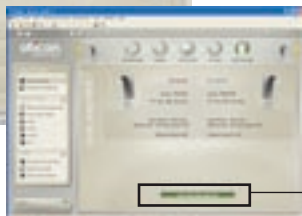
Use the Fitting Assistant to help you fine tune

1. Select a tab: General Perception, Speech Perception or Own Voice
2. Adjust the control that matches the child's specific complain (move the control left or right - the initial setting is in the middle)
3. Play sounds from the "Oticon Sound Studio" by selecting "Sounds for Children"



End Fitting

1. Review selected rationale/identity and programs
2. Click on the Buttons and Beeps to configure "Operate Pushbutton and VC" and "Beeps"



Click on "Save, Program and Exit" to store settings and complete the fitting