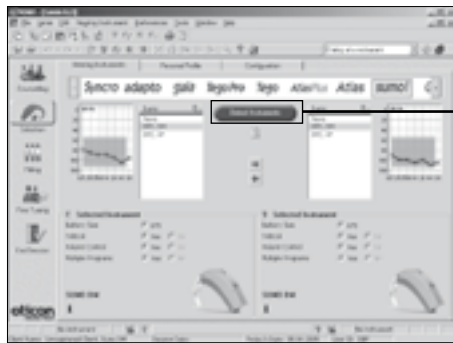


## Sumo DM Paediatric Quick Fitting Guide

This Paediatric Quick Fitting Guide illustrates the recommended flow and initial fitting of Sumo DM for children. More information is available in the comprehensive fitting guides for adults and children.



### Select hearing instruments

1. Turn on the instrument (by closing the battery door and turning the VC up) and connect to the HiPro or Noah link via Oticon programming cable #3 and the black Sumo programming shoe.
2. Click “Detect instruments”.

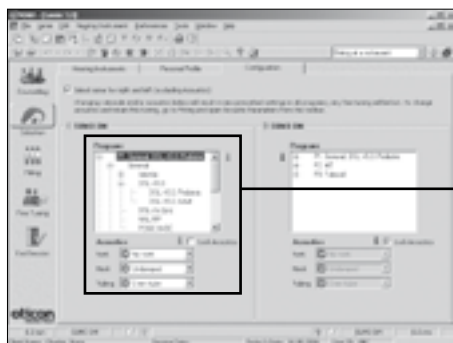
OR:

3. Choose Sumo from the hearing instruments across the top of the screen.
4. Click “BTE, DM”.



### Complete Personal Profile

1. Ensure that the child's age is correct (automatically imported from Noah). The child's age determines the predicted RECD and REUR values used to prescribe gain and MPO.
2. Click on “RECD and REUR” to select the transducer used for audiometry measurement.
3. Enter the actual RECD values if you have measured them.

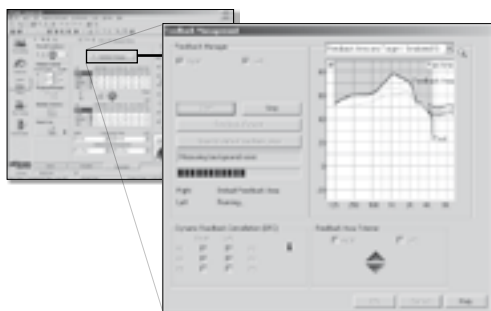


### Configure instruments

1. Select Programs and check the configuration of the 3-position switch. The default configuration is M-MT-T.
2. Check acoustics for agreement between prescribed earhooks, tubing and ear-mould venting.

\* When a FM shoe is connected, T program becomes FM and MT becomes FM+M.

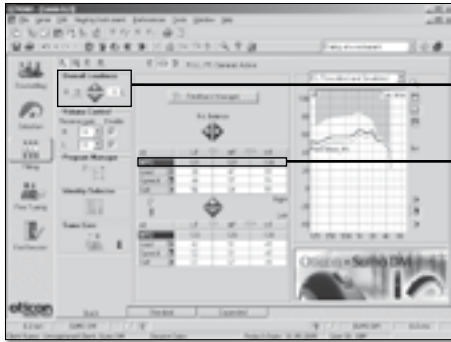
\* The prescribed default rationale for children will be DSL v5.0 paediatric.



### Enter Feedback Manager (FBM)

1. Click “Start” to run the FBM while the child remains still (it may help to distract the child).
2. Click “Continue” to run the FBM again while you try to get the child to move jaw and head to address dynamic conditions.
3. If the child is unable to sit still, use the Feedback Trimmer to manually adjust the settings.

\* Binaural fitting: Run the FBM for the left and right ears separately.



### Check Overall Loudness level

1. Click on the “Overall Loudness” trimmer and +/- to simultaneously adjust the MPO, gain and compression levels.

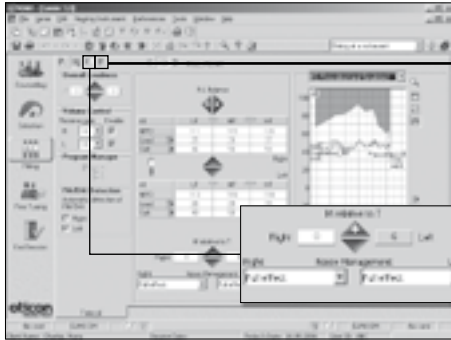
\* Changes made to this trimmer are kept across all programs and Identities.

\* Click “disable” to make the VC wheel tamper resistant and to disable the OFF function in the VC.

### Check MPO level

1. Check the child's reaction to loud sounds (clapping, loud voice, rustle paper, etc.).
2. Click on the MPO line and +/- to adjust the MPO level.

\* Ensure that the child does not experience unnecessary discomfort.

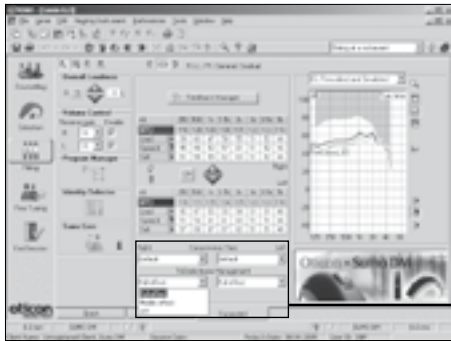


### Confirm settings for T programs

1. Access the Telecoil function within a designated program.
2. To boost T in an MT program, select gain trimmers to increase gain. Then decrease the M relative to the increase of the T trimmer.

\* You can set the telecoil up to 6 dB louder than the M program.

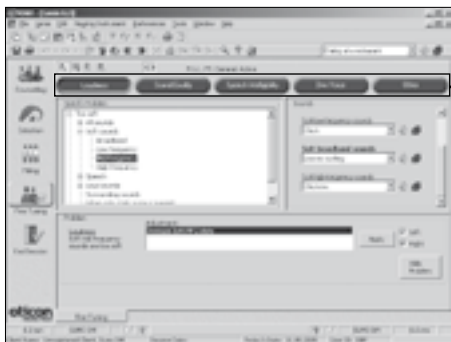
\* Click “disable” to turn off the FM auto-detect function.



### Verify the fitting

1. Open the REM dialogue from Noah toolbar to confirm REM targets with those in Genie.

\* Access the Expanded Panel to review settings for compression time and TriState Noise Management (default is “Full”).



### Fine tune using the Fine Tuning guide

1. Select one of the five buttons at the top of the screen that matches the child's specific complaint.
2. Follow the tree structure and double-click on the word that best describes the child's complaint.
3. Click “Apply” to implement the fine tuning changes.

\* The child's parents may offer some insight in cases where the child is unable to provide feedback.

\* Play sounds from the “Sounds and Pictures” dialogue by selecting “Sounds for Children”.



### End Session

1. Access the End Session panel.
2. Review selected identities and programs.
3. Click on “Status Indicator” to view and change beep and light (LED) settings.
4. Click on “Save Program and Exit” to save settings and complete the fitting.

