

## Vigo Paediatric Quick Fitting Guide

This Paediatric Quick Fitting Guide illustrates the recommended flow and initial fitting of Vigo for children.

More information is available in the Genie Paediatric Fitting Guide.



### Family

Select the family of the hearing instruments

1. Turn on the instrument and connect it to the HiPro or Noah link via Oticon programming cable #3, and the programming shoe (BTE) or flex connector for ITE
2. Click "Detect instruments"

**Or:**

3. Choose the "Vigo" family from the family selection



### Select Instrument

Choose style

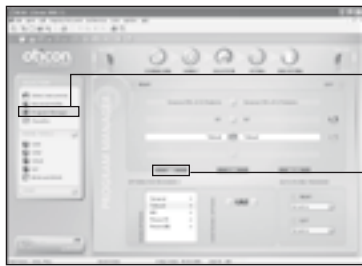
Click on the style (e.g. "BTE")



### Personal Profile

Ensure correct age; choose the rationale and the programs

1. Ensure that the client's age is correct (automatically imported from Noah).
2. Complete hearing instrument experience duration (none, short time, long term)



### ProgramManager

Select Programs and check their configuration. There are 4 programs available.

The default configuration is 2 programs; a general and a T program.

1. The default rationale for children is DLS v5.0, paediatric
2. There will be 2 programs available: general and Telecoil

\* To add an extra program, click Add and select Options for Program

\* When the Amigo R12 FM receiver is connected, 2 programs are added: FM+M and FM



### Acoustics

Check acoustics for agreement between prescribed earhooks, tubing and ear mould venting



## RECD and REUR

### Insert the transducer used for audiometry measurement

1. Click RECD or REUR
2. Enter the RECD values if you have measured them

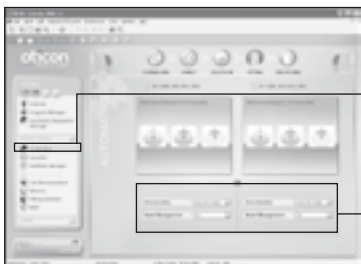
*\*Use the appropriate tools to establish goals and expectations with the parents/child/teachers*



## Fitting

### Verify settings

1. Make any changes using +/-



## Automatics

**Go to automatics to review settings for compression time, TriState noise management (default is “on”) and multi-band adaptive directionality**



## Fitting Assistant

**Use the Fitting Assistant to help you fine tune**

1. Select a tab: General Perception, Speech Perception or own voice
2. Adjust the control that matches the child’s specific complaint (move control left or right- the initial setting is in the middle)
3. Play sounds from the “Sounds and Pictures” by selecting “sounds for children”



## End Fitting

1. Review selected rationale/identity and programs
2. Click Button Settings to test and change the operation of the push button as well as VC and beep settings

**Click on “Save Program and Exit” to store settings and complete the fitting**

