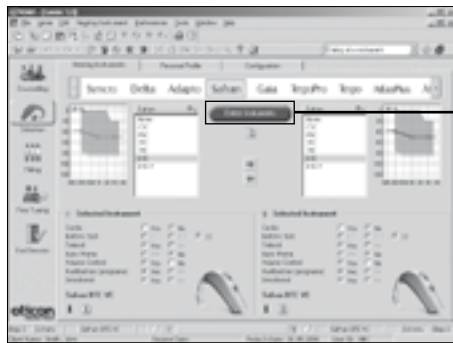


Safran Paediatric Quick Fitting Guide

This Paediatric Quick Fitting Guide illustrates the recommended flow and initial fitting of Safran for children. More information is available in the Safran Product and Fitting Information.

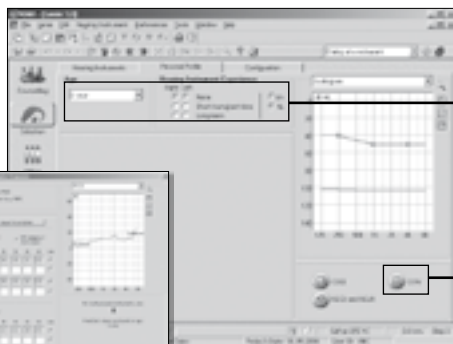


Select hearing instruments

1. Turn on the instrument and connect it to the HiPro or Noah link via Oticon programming cable #3 and the programming shoe (BTE) or flex connector for ITE.
2. Click “Detect instruments”.

OR:

3. Choose the “Safran” family from the family selection panel across the top of the screen.
4. Click on style (e.g. “BTE”) and select the optional features (e.g. volume control).



Ensure correct age and complete RECD

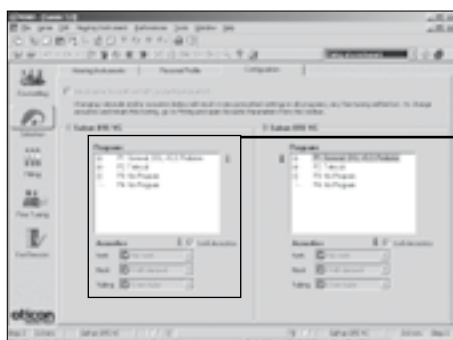
1. Ensure that the client’s age is correct (automatically imported from Noah).
2. Complete hearing instrument experience duration (none, short time, long term).
3. Click on “RECD and REUR” and insert the transducer used for audiometry measurement.
4. Enter the actual RECD values if you have measured them.



Use the COW questionnaire

Establish expectations and goals for the child:

Ask the child, family and teachers to identify specific situations in which they would like the child to hear better.

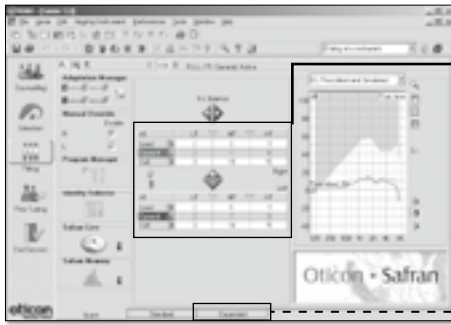


Configure instruments

1. Select Programs and check the configuration of the programs. The default configuration is 2 programs: a general and a T program. There are 4 programs available.
2. Check acoustics for agreement between prescribed earhooks, tubing and ear-mould venting.

* When a FM shoe is connected, 2 programs are automatically added: FM+M and FM.

* The prescribed default rationale for children will be DSL v5.0 paediatric.



Verify setting

1. Make any changes using the fitting controls.

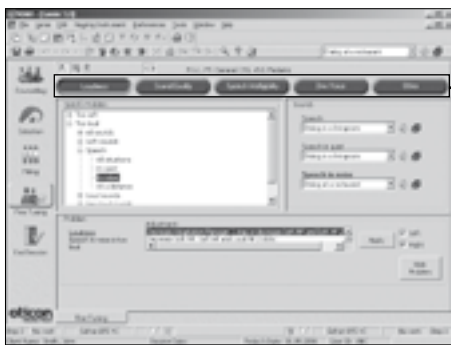
* Uncheck “enable” on manual overview to disable the VC.

* To review settings for compression time, noise management (default is “on”) and trimode adaptive directionality, open Expanded Panel.



Demonstration tools

1. Safran Live is a demonstration tool that can help understand how the hearing aid works.
2. Safran Memory shows how the instrument is used and to which environments it has been exposed.

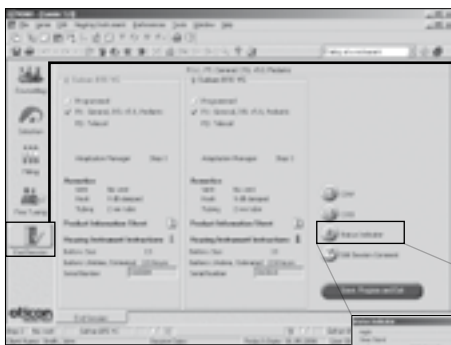


Fine tune using the Fine Tuning guide

1. Select one of the five buttons at the top of the screen that matches the child’s specific complaint.
2. Follow the tree structure and double-click on the word that describes the child’s complaint best.
3. Click “Apply” to implement the fine tuning changes.

* The child’s parents may offer some insight in cases where the child is unable to provide feedback.

* Play sounds from the “Sounds and Pictures” dialogue by selecting “Sounds for Children”.



End session

1. Access the End Session panel.
2. Review selected identity and programs.
3. Click on “Status Indicator” to test and change beep settings.
4. Click on “Save Program and Exit” to save settings and complete the fitting.